

# RRMT0055

December 2025



BACKED BY  
**Roadranger**  
SUPPORT



# RRMT-0055: Transmission Air Supply Pressure Sensor (TASPS) Replacement Service Procedure - Endurant HD, XD and PACCAR TX-12, TX-18

Date: December 04, 2025

Updated:

**NOTICE:** Only perform this service procedure if authorized by Eaton Cummins Automated Transmission Technologies or sent here from **TAIB-1015**.

## Special Instructions:

- TASPS replacement can be performed with transmission in-chassis.
- Drain vehicle air system/tanks and MTM air supply line to MTM prior to performing procedure.

## Special Tools:

- Transmission Service Manual
  - Endurant HD, TRSM0950
  - Endurant XD, TRSM0960
- T45 Torx standard drive bit
- 24mm thinned walled deep socket
  - Socket width (OD) not to exceed 30.5 mm
  - Socket internal depth min 50 mm, deep socket required to prevent sensor connector damage
- Torque Wrench, Nm (lb-in)
- Black Permanent Marker

## Parts List:

| Part Description            | Part Number  | Qty    |
|-----------------------------|--------------|--------|
| TASPS (sensor)              | 10005053     | 1      |
| MTM Cover Seal*             | 10005055     | 1      |
| MTM Cover Cap Screw*        | 10005056-MP4 | 4-Pack |
| Output Yoke Retainer Bolt** | 10000949     | 1      |

\*Only required if damaged or lost during repair.

\*\*Only required if additional access clearance is required for in-chassis repairs.

## Prepare vehicle and work area.

1. Key off.
2. Set vehicle parking brake and chock wheels.
3. Drain vehicle air system/tanks and MTM air supply line.

**CAUTION:** Drain vehicle air system/tanks and MTM air supply line prior to removing TASPS. Failure to drain vehicle air system may result in component damage and/or personal injury.

4. Clean work area and MTM surfaces with shop air to ensure no debris enters MTM system during procedure. Go to **Procedure A**.

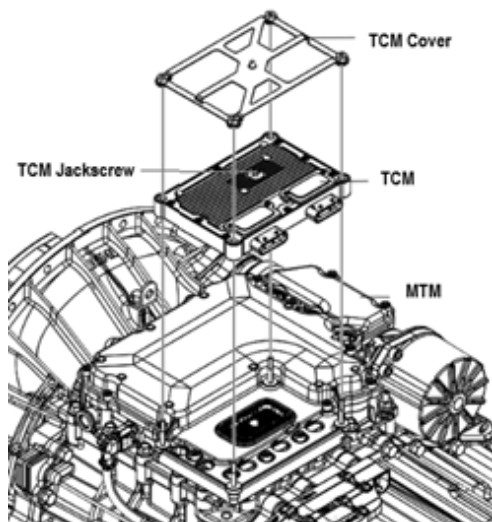
**CAUTION:** Ensure work area and MTM is free of debris. Failure to clean work area may result in component damage due to debris entering the MTM system.

**CAUTION:** Follow all recommended service literature instructions. Failure to follow all instructions may result in component damage and/or personal injury.

## Procedure A:

Remove Transmission Control Module (TCM). Go to respective transmission model service manual.

- Endurant HD TRSM0950 **Transmission Control Module (TCM)**
- Endurant XD TRSM0960 **Transmission Control Module (TCM)**



1. Unscrew 4 TCM Cover nuts (10 or 13 mm) and remove TCM Cover.
2. Unscrew TCM 7 mm Jackscrew. Lift and remove TCM for MTM.

**NOTICE:** Do not allow contamination into connectors on TCM or MTM.

3. Inspect TCM Seal for damage. Go to **Procedure B**.

**NOTICE:** Replace TCM Seal if damaged.

**Note:** If additional access clearance is required for transmission in-chassis repair, remove Output Yoke. Go to respective transmission model service manual:

- Endurant HD TRSM0950 **Output Yoke**
- Endurant XD TRSM0960 **Output Yoke**

## Procedure B:

### Remove MTM Cover

1. Remove 16 MTM Cover MTM Housing T45 cap screws.



2. Remove MTM Cover.

**NOTICE:** Do not allow contamination into MTM.



3. Inspect MTM Cover O-ring, press in place seal, for damage.
  - a. If **no** damage, go to **Step 4**.
  - b. If damaged, replace MTM or O-ring if available.



4. Locate the TASPS.



5. Inspect 3-Way TASPS Connector, confirm connector is properly seated and latched.
  - a. If connector is properly seated and latched, go to **Step 6**.
  - b. If connector is **not** properly seated or latched, record findings and go to **Step 6**.



6. Inspect 3-Way TASPS Connector wires, confirm wires are not damaged and terminals are properly seated/locked into connector.
  - a. If wires are damaged and/or terminals not properly seated/locked into connector, record findings and **replace MTM**.
  - b. If **no** wire damage and terminals are properly seated/locked in connector, go to **Step 7**.
7. Carefully disconnect the 3-Way TASPS Connector by moving the retaining clip aside and gently pulling on the connector.

**Note:** Ensure yellow connector seal and white terminal clip remains on the harness side of 3-Way TASPS connector.



- Using hand tools, remove TASPS using a 24mm thinned walled deep socket.

**NOTICE:** Ensure vehicle air system/tanks and MTM air supply line have been drained.



**NOTICE:** Do not allow contamination into MTM.

- Inspect removed TASPS and MTM side of TASPS threaded opening, ensure O-ring came out with sensor and opening is free of debris.



- Inspect new TASPS and ensure O-ring is installed.

- Inspect MTM side of TASPS threaded opening and ensure opening is free of debris.



12. Install replacement TASPS and torque to **10 Nm** (89 lb-in).



13. Carefully connect 3-Way TASPS Connector, ensure connector is seated and latched. Go to **Procedure C**.



### **Procedure C:**

Install MTM Cover

1. Inspect MTM Cover O-ring, press in place seal, ensure O-ring properly seated in groove and wipe clean with a lint free cloth.

**NOTICE:** Do not allow contamination into MTM.



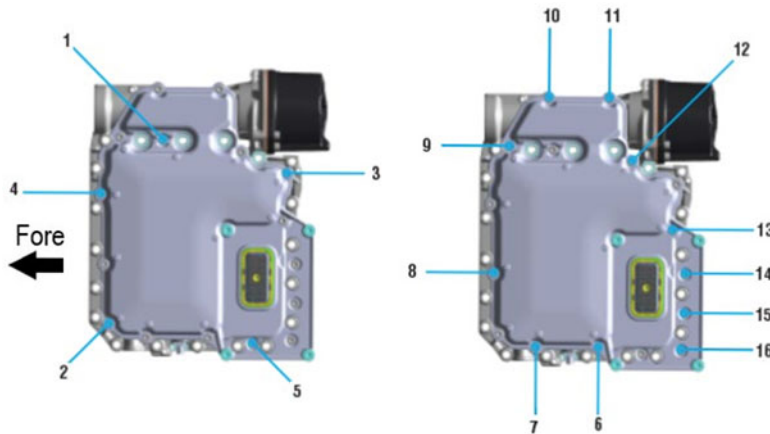
2. Inspect MTM Housing, cover sealing surface, wipe clean with a lint free cloth.
3. Install MTM Cover to MTM Housing.



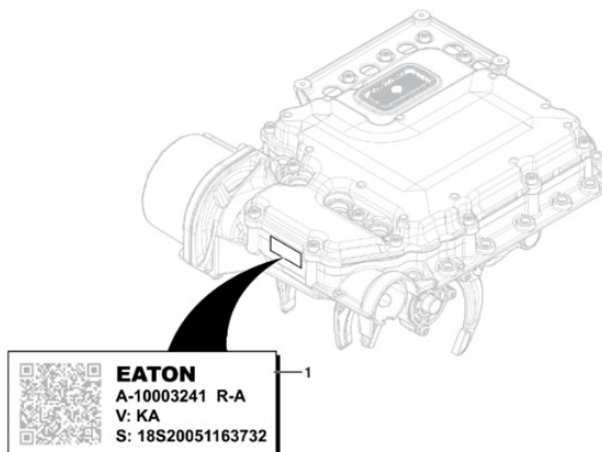
4. Install 16 MTM Cover to MTM Housing T45 cap screws.
5. Torque MTM Cover cap screws 1 through 5 and 6 through 16 to 23-27 Nm (17-19 ft-lb) as shown in the torque sequence below.



**CAUTION:** Follow the MTM Cover cap screw torque specification and sequence as shown. Failure to follow torque specification and sequence may cause in an improper seal between the cover and housing resulting in water ingestion.



6. Re-torque MTM Cover cap screws 1 through 16 to 23-27 Nm (17-19 ft-lb) in a crisscross pattern.
7. Locate MTM parts label (1).



- Using a permanent black marker, place a dot on the MTM parts label as indicated below. Go to **Procedure D**.



### Procedure D:

**Install Transmission Control Module (TCM).** Go to respective transmission model service manual:

- Endurant HD TRSM0950 **Transmission Control Module (TCM)**
  - Endurant XD TRSM0960 **Transmission Control Module (TCM)**
- Install TCM Seal on TCM 74-Way Harness Connector.  
**NOTICE:** Replace TCM Seal if damaged.  
**NOTICE:** Do not allow contamination into connectors on TCM or MTM.
  - Align TCM to MTM 74-Way Harness Connector and TCM studs, then install TCM.
  - Torque TCM 7 mm Jackscrew to 3.0-4.0 Nm (26.6-35.4 lb-in).
  - Install TCM Cover over 4 TCM studs and torque 4 TCM Cover Nuts to 8.8-10.4 Nm (78.92 lb-in) in a crisscross pattern.  
Go to **Procedure E**.

**Note:** If sensor was replaced in-chassis and Output Yoke was removed, replace Output Yoke Retainer Bolt. Go to respective transmission model service manual:

- Endurant HD TRSM0950 **Output Yoke**
- Endurant XD TRSM0960 **Output Yoke**

### Procedure E:

- If sensor was replaced with transmission in-chassis, **process complete**.
- If sensor was replaced with transmission removed from chassis, go to respective transmission model service manual and complete all steps:
  - Endurant HD TRSM0950 **Transmission**
  - Endurant XD TRSM0960 **Transmission**

## Warranty Information:

### Warranty Parts:

- TASPS 10005053
- If necessary:
  - MTM Cover O-ring: 10005055
  - MTM Cover Cap Screws: 10005056-MP4
- If repair in-chassis and additional access is required:
  - Output Yoke Retainer Bolt: 10000949

### Warranty Labor (ECWY3000):

- Sensor replaced with **transmission in-chassis** recommended:
  - Diagnostics (Up to 1.0 hour)
  - TASPS R&R (Up to 1.5 hour)
  - Verify Repair Road Test (Up to 0.3 hour)
  - If additional access is required:
    - Output Yoke R&R (Up to 1.0 hour)
    - If equipped, PTO R&R (Up to 1.0 hour)

### General Claim Coding:

- Line Item tab - Repair Line List
  - Primary Casual Part #: 10005053 (SENSOR, AIR PRESSURE)
  - Secondary Casual Part #: N/A
  - Complaint Code: Varies
  - Failure Mode Description: AIR PRESSURE SENSOR-APS-READING INCORRECT PRESSURE (TFM-0530)
  - Responsibility Code:
    - RTW COMMITMENT (601) for RTW claims
    - Vendor Part (418) for all others
  - Part Return Instructions: Per OEM or RTW Instructions

The material contained in this document is product improvement information. Eaton is not committed to, or liable for, canvassing existing products. 2023-FSUD-4552.

### Change Log:

| Date          | Description         |
|---------------|---------------------|
| December 2025 | Document published. |

Copyright Eaton Cummins Automated Transmission Technologies, 2025. Eaton Cummins Automated Transmission Technologies hereby grant their customers, vendors, or distributors permission to freely copy, reproduce and/or distribute this document in printed format. It may be copied only in its entirety without any changes or modifications. THIS INFORMATION IS NOT INTENDED FOR SALE OR RESALE, AND THIS NOTICE MUST REMAIN ON ALL COPIES.

**Note:** Features and specifications listed in this document are subject to change without notice and represent the maximum capabilities of the software and products with all options installed. Although every attempt has been made to ensure the accuracy of information contained within, Eaton makes no representation about the completeness, correctness or accuracy and assumes no responsibility for any errors or omissions. Features and functionality may vary depending on selected options.

**For spec'ing or service assistance, call 1-800-826-HELP (4357) or visit [www.eaton.com/roadranger](http://www.eaton.com/roadranger). In Mexico, call 001-800-826-4357.**

Roadranger: Eaton and trusted partners providing the best products and services in the industry, ensuring more time on the road.

**Eaton Cummins Automated Transmission Technologies**  
P.O. Box 4013  
Kalamazoo, MI 49003 USA  
800-826-HELP (4357)  
[www.eaton.com/roadranger](http://www.eaton.com/roadranger)

Printed in USA



BACKED BY  
**Roadranger**  
SUPPORT